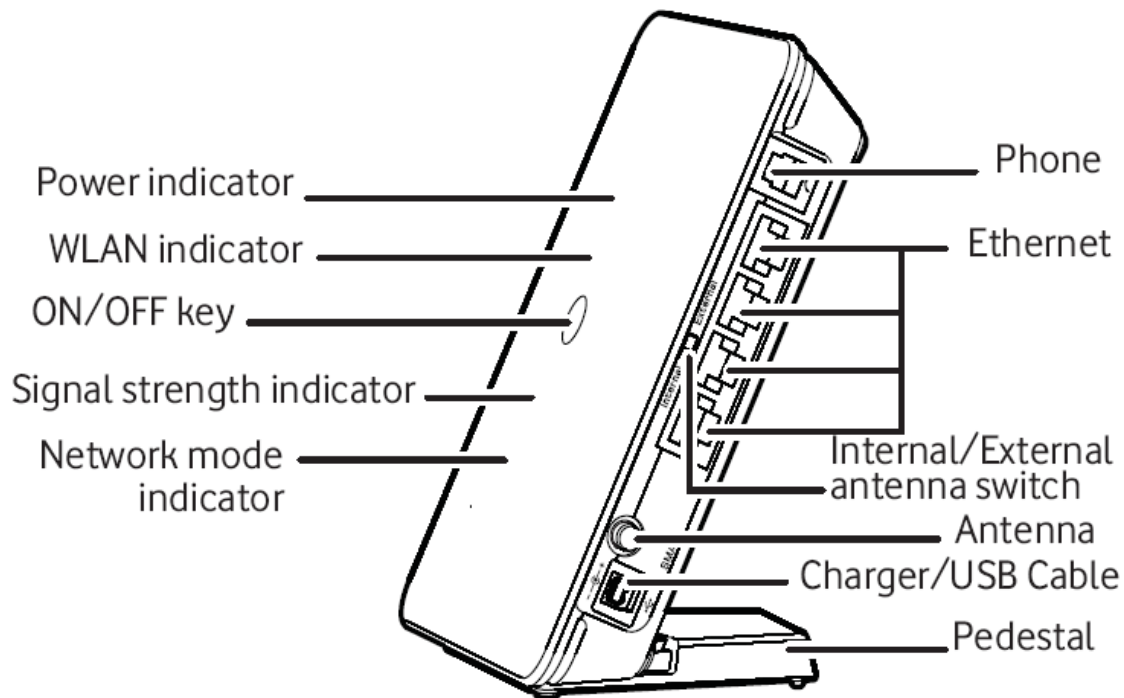


MTN 3.5GRouter F@stLink Function Summary



System Requirement:



The required PC Configuration for using the MTN 3.5G Router F@stLink is as follows:

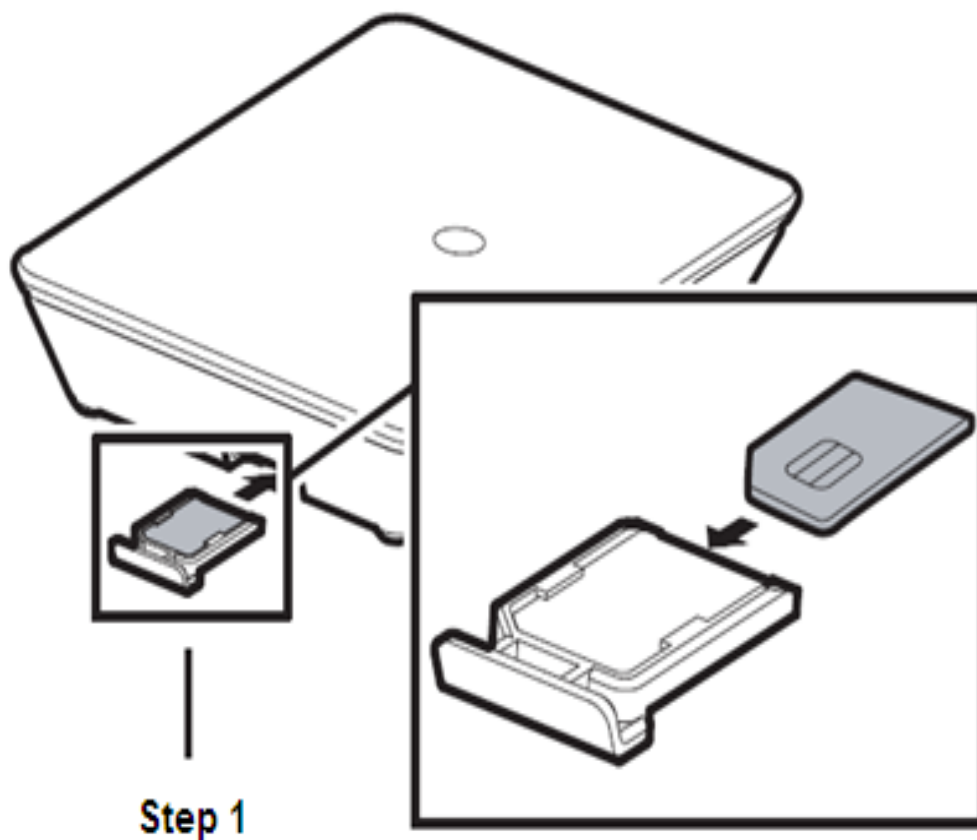
- Memory : 128 MB RAM or above
- CPU: Pentium III/IV 500 MHz or above
- Hard Disk: 100MB or above of available space
- OS: Microsoft Windows XP2, XP3 , Windows Vista or Windows 2000 SP4
- LCD Resolution: 800 * 600 pixel or more
- Interface: Standard USB Interface
- Internet Browser: Firefox, Explorer, Netscape or above.

Router Basic Set-up:

Step 1: Insert the SIM Card Remove the SIM cardholder from the router. Slide the SIM card into the card slot of the holder with the golden contact facing upward. Insert the cardholder into the router.

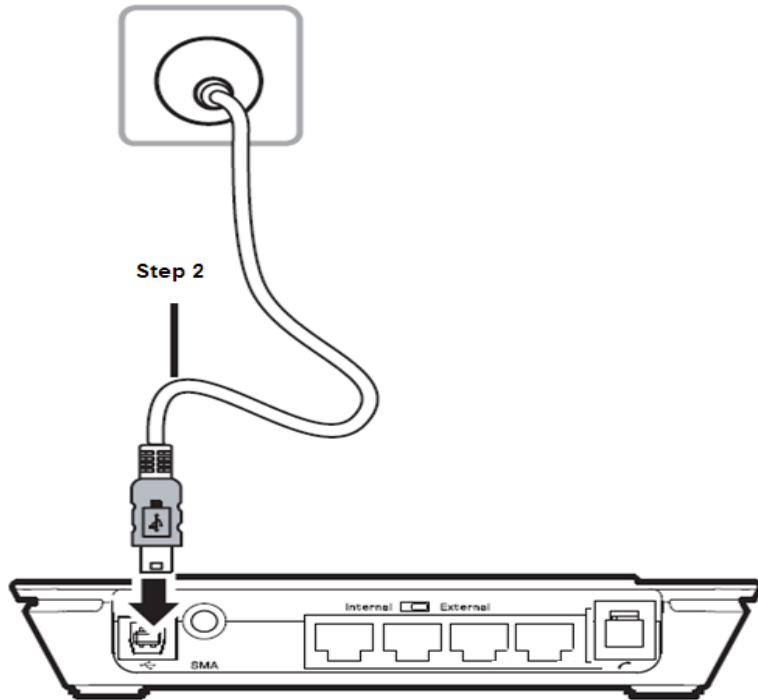


Caution: Before inserting or removing the SIM card, you must disconnect the router from the power adapter.



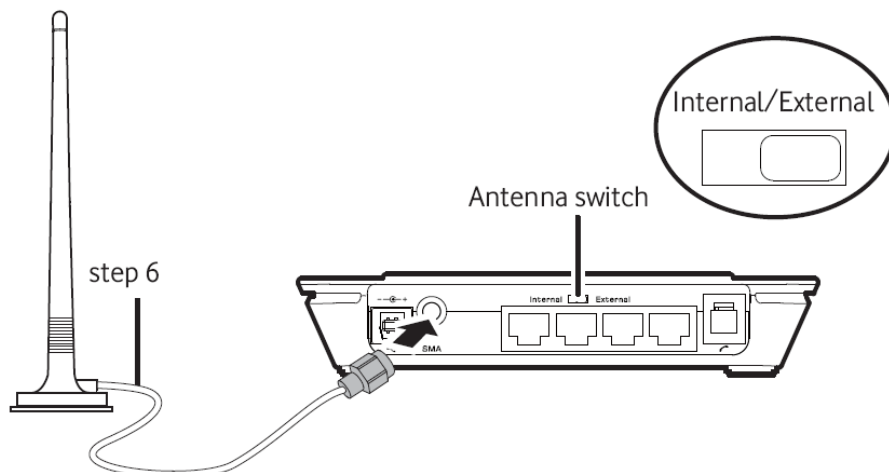
Step 2: Connect to the Power Adapter:

Use a power adapter that is compatible with the router; otherwise, the router could damage. This normally comes with the router.



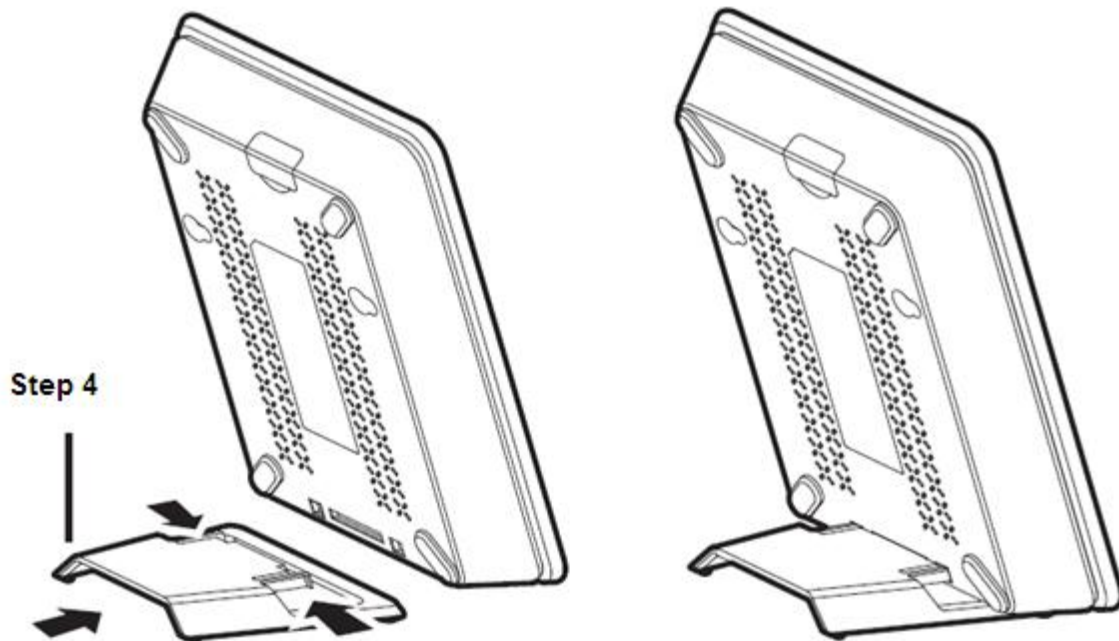
Step 3: Connect the External Antenna (Recommended)

In areas with weak network signal strength, you may attach an external antenna to improve your connection quality. Connect the external antenna cable to the antenna jack on the main unit making sure it is screwed firmly in the router. Set the antenna switch to “external”.



Step 4: Locating the router

To improve the wireless reception, place the router near a window and as high as possible. The router can be placed horizontally on a table, hanging against the wall, or leaning against the pedestal. Press the clips on the pedestal, and insert the pedestal into the router as shown in the diagram below. The pedestal will support the router.



Caution: To avoid interference from the wireless signal, place electrical devices at least one metre from the router.

Step 5: Power on the router

Press and hold the **ON/OFF** button on the front of the router to power it on or off.


Step 6: Protect Yourself

We recommend you change the following settings immediately to secure your wireless router and prevent unauthorized access. Use your internet browser to navigate to the router management page (<http://192.168.1.1>), and then select “Advanced Settings”.



Router Indicator Status

The LEDs on the 3.5G Router F@stlink indicates the network signal strength and the status of the router connection to the network.

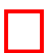

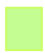

Power indicator

-  Light Green: Steady on and in light green, the router is switched on successfully.








WLAN indicator

-  Light Green: Steady on and in light green, the WLAN is enabled.
-  Flashing Light Green: Data is being transmitted.

Signal strength indicator

-  Fast Blinking in Red: SIM card error (SIM card does not exist or the PIN code is not verified).
-  Solid red: Steady on and in red, signal level is low and weak.
-  Light Green: Steady on and in yellow, signal level is in medium.
-  Solid green: strong signal strength.

Network mode

-  Double flashing green: searching for the network.
-  Flashing green: registering with 2G, 3G or 3.5G Network.
-  Solid green: 2G, 3G or 3.5G network connection active or power
-  Rapidly flashing green: applying a firmware upgrade to the router.
-  Flashing blue: registering with the 3G network.
-  Solid blue: WCDMA data service connected 3G connection.
-  Solid cyan: Steady on and in cyan, HSPA data service connected.

Note: When the router is initializing, the network mode LED is solid green for three seconds.

Using the USB for the Modem

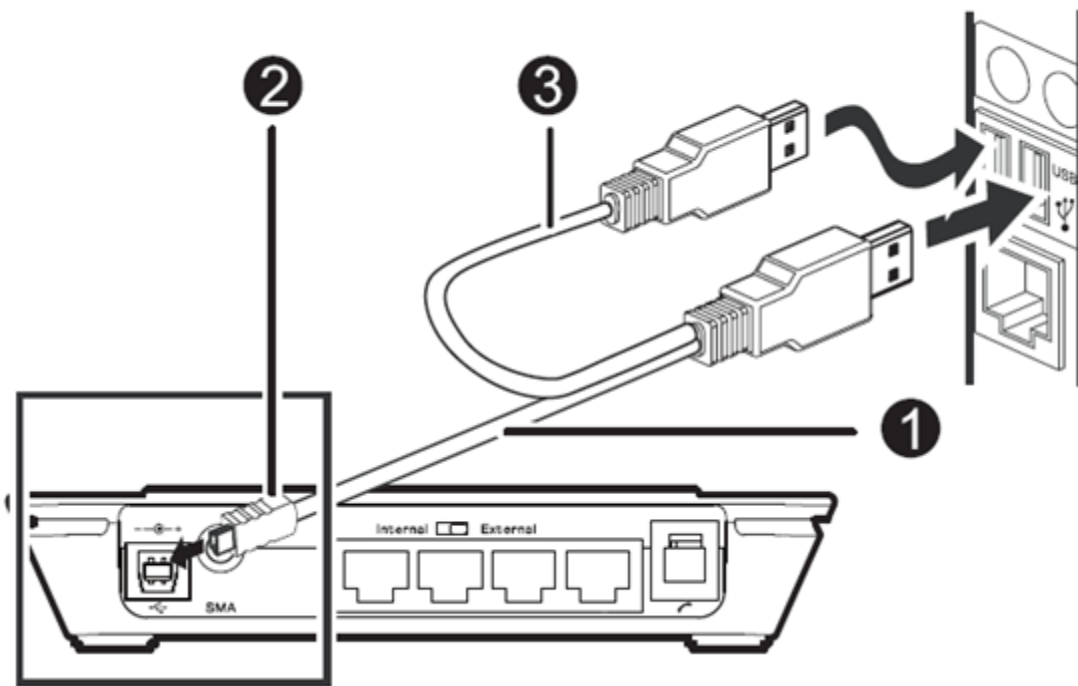
You can use the USB for the modem mode and this can be done by connecting the router to the PC with the USB Cable; In this case, the router serves as a modem and a single user mode. The USB double-ended data cable is required because it acts as an additional power supply. If you are not using a laptop, Make sure that all three USB cable connectors are plugged securely into their sockets.

Step 1: Insert the SIM card.

Step 2: Connect the router to the PC with the supplied USB data cable.

Step 3: The system automatically recognizes the new hardware as a USB device, and displays in the desktop system tray. The router and PC are connected successfully.

Step 4: The installation program resident on the router starts automatically. After a successful installation, the software will then request for the access point, which is “**internet**”. By default, the router dials up “***99#**” to access the internet as required automatically.



Note: The first time you plug your router into a PC, the setup for the software must start automatically and proceed to set up your router. If for some reason the setup does not start, restart computer. Upon restart, the USB slot will automatically read the drive. Follow the on-screen instructions.

Setting up your router may take a few minutes, but once the setup is finished, the MTN router software should start automatically.