

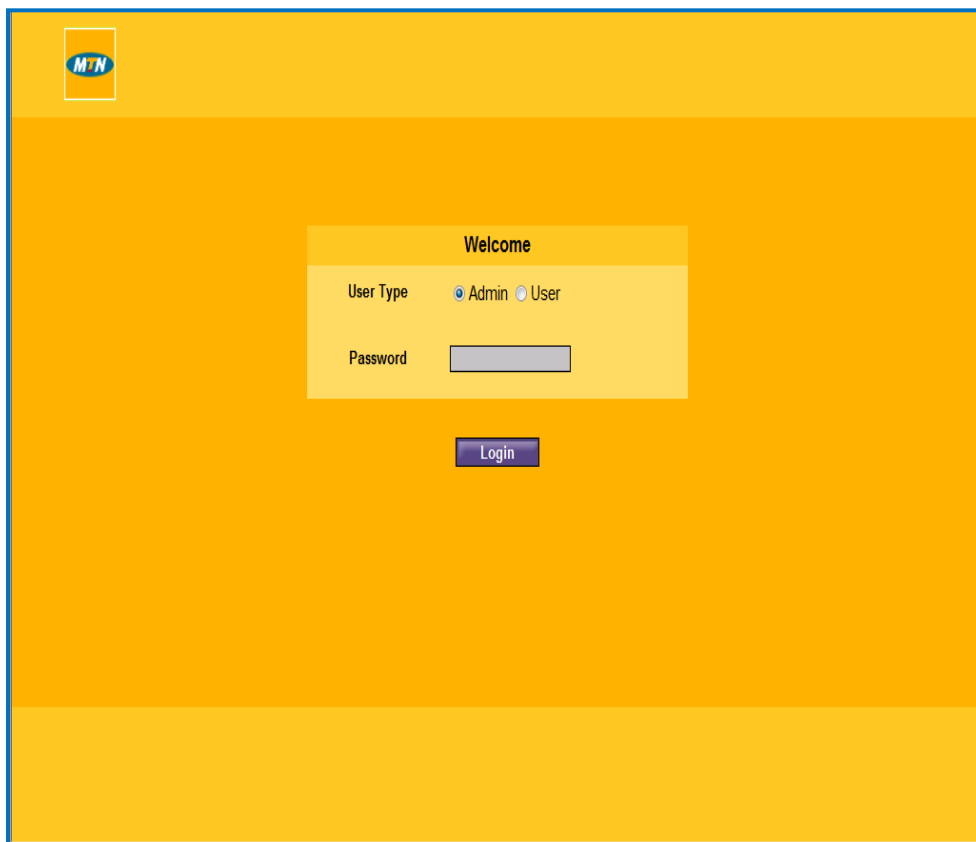
HOW TO CHANGE YOUR MTN 3.5G ROUTER F@STLINK ON XP – OPTION 1

The MTN range of routers allows you to setup a wireless (WLAN) flexibly access to the internet. The latest 3.5G router known as the 'MTN 3.5G Router F@st Link', is equipped with an embedded high-speed wireless solution which allows a user to share connection with multiple users.

Before you use the MTN 3.5G Router Fastlink, we recommend you change the following settings immediately to secure your wireless router and prevent unauthorized access.

Step 1: Log in

Use your internet browser to navigate to the router management page (<http://192.168.1.1>), and then type in your password.



The screenshot shows the login interface for the MTN 3.5G Router. It features a yellow background with the MTN logo in the top left. The login form is centered and contains the following elements:

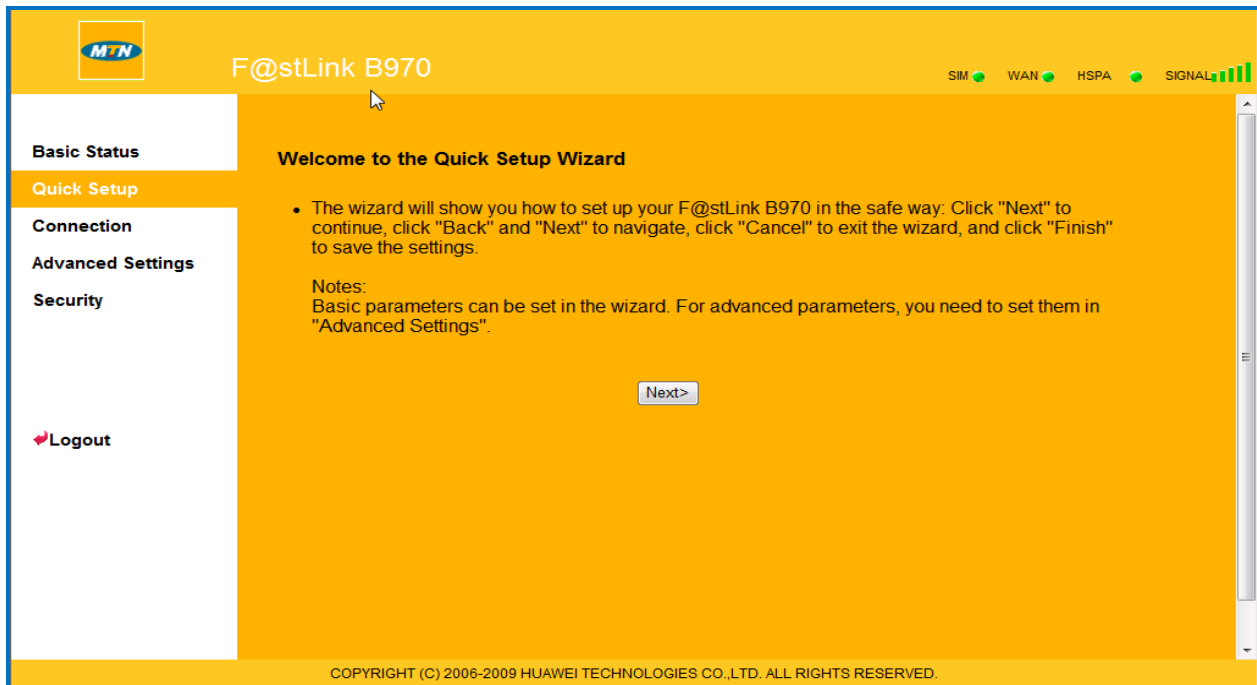
- Welcome**: A heading for the login section.
- User Type**: A label followed by two radio buttons: Admin and User.
- Password**: A label followed by a text input field.
- Login**: A blue button to submit the login information.

Note: In order to avoid any conflict in configuration, only one user is allowed to log into the router management system at a time.

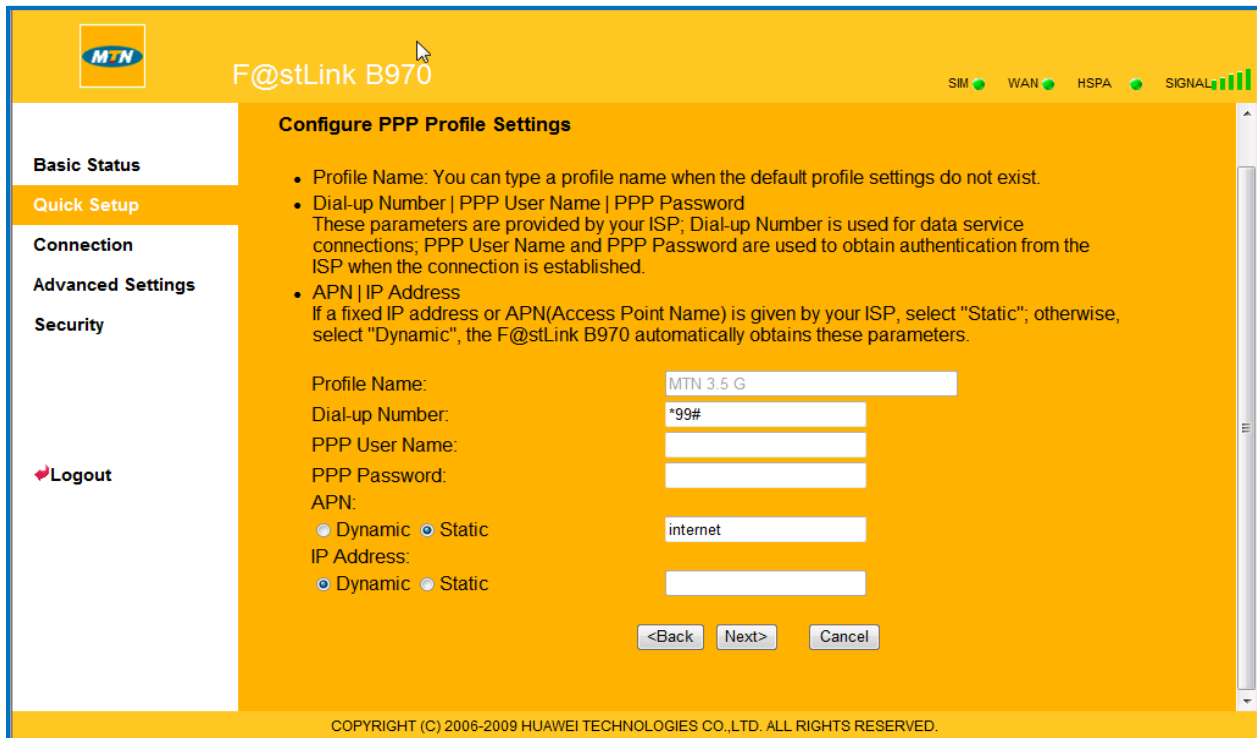
Admin: The default password is **admin**. Admin option allows the administrator to view and modify configurations.

User: This option allows the user to view only the basic information. The default password is **user**.

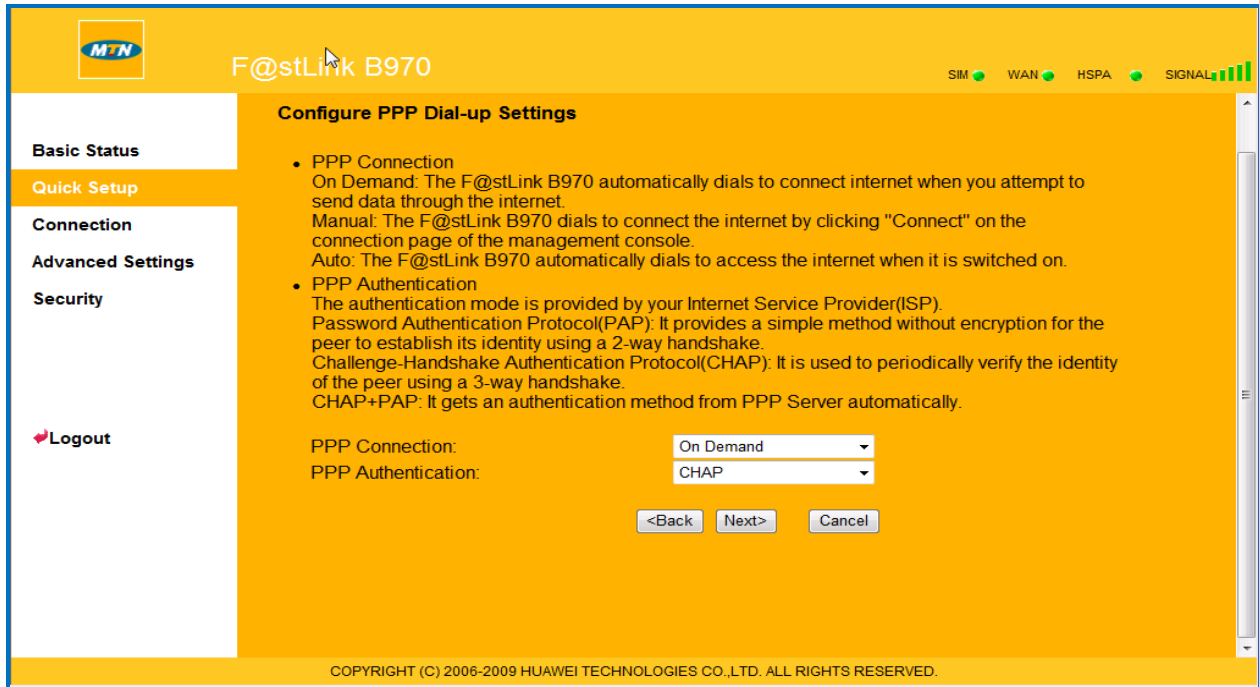
Step 2: Click on Quick Setup and then <Next> to continue



Step 3: Click <Next> to continue (Caution: Do not change settings on the screen)



Step 4: Click <Next> to Continue (Caution: Do not change settings on the screen)



Configure PPP Dial-up Settings

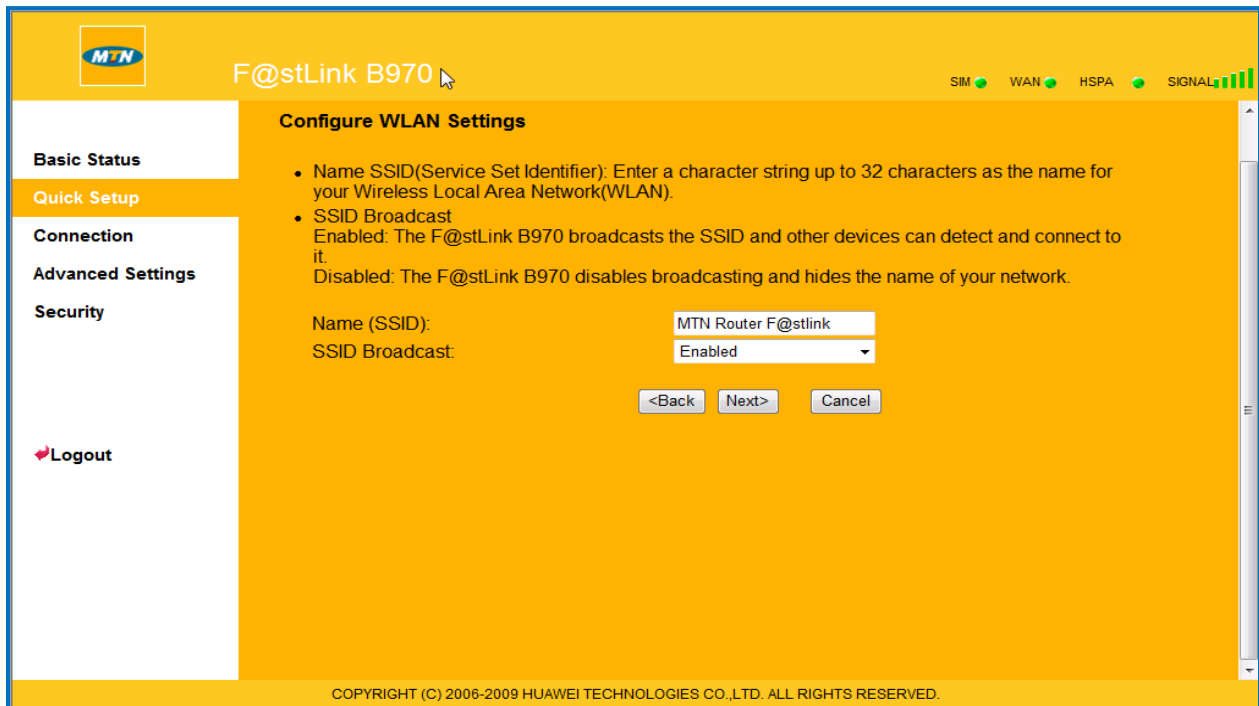
- PPP Connection
On Demand: The F@stLink B970 automatically dials to connect internet when you attempt to send data through the internet.
Manual: The F@stLink B970 dials to connect the internet by clicking "Connect" on the connection page of the management console.
Auto: The F@stLink B970 automatically dials to access the internet when it is switched on.
- PPP Authentication
The authentication mode is provided by your Internet Service Provider(ISP).
Password Authentication Protocol(PAP): It provides a simple method without encryption for the peer to establish its identity using a 2-way handshake.
Challenge-Handshake Authentication Protocol(CHAP): It is used to periodically verify the identity of the peer using a 3-way handshake.
CHAP+PAP: It gets an authentication method from PPP Server automatically.

PPP Connection:

PPP Authentication:

COPYRIGHT (C) 2006-2009 HUAWEI TECHNOLOGIES CO.,LTD. ALL RIGHTS RESERVED.

Step 5: Click <Next> to Continue (Caution: Do not change settings on the screen)



Configure WLAN Settings

- Name SSID(Service Set Identifier): Enter a character string up to 32 characters as the name for your Wireless Local Area Network(WLAN).
- SSID Broadcast
Enabled: The F@stLink B970 broadcasts the SSID and other devices can detect and connect to it.
Disabled: The F@stLink B970 disables broadcasting and hides the name of your network.

Name (SSID):

SSID Broadcast:

COPYRIGHT (C) 2006-2009 HUAWEI TECHNOLOGIES CO.,LTD. ALL RIGHTS RESERVED.

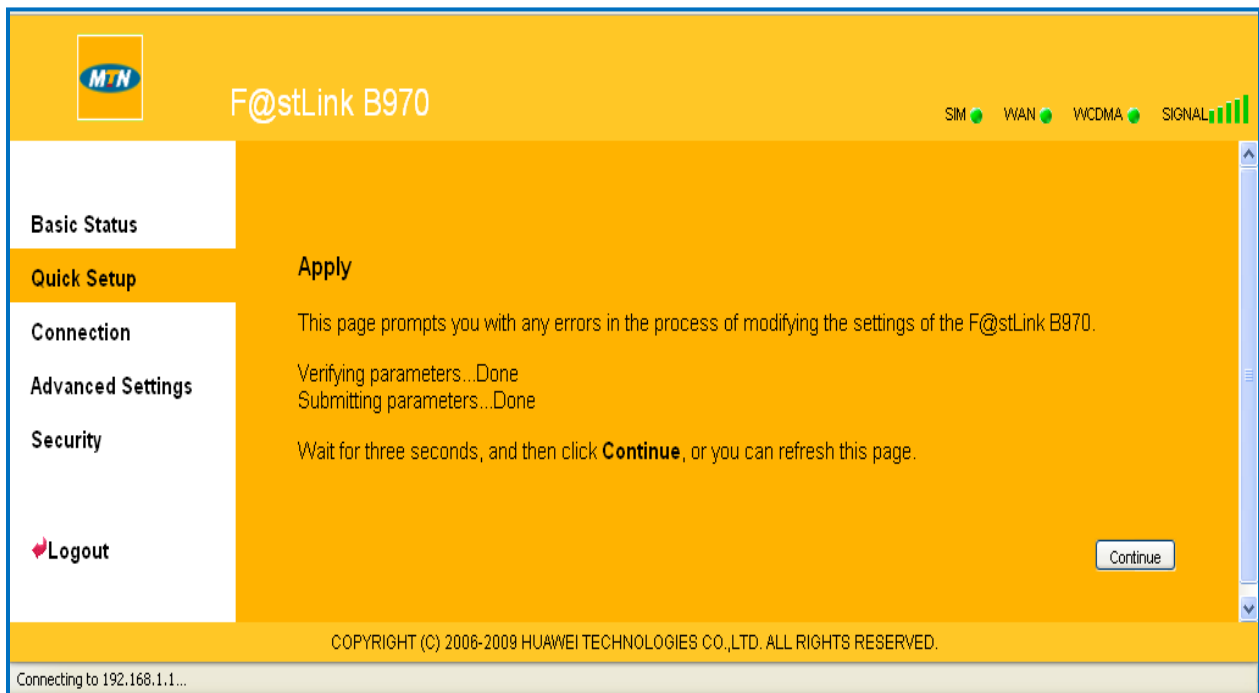
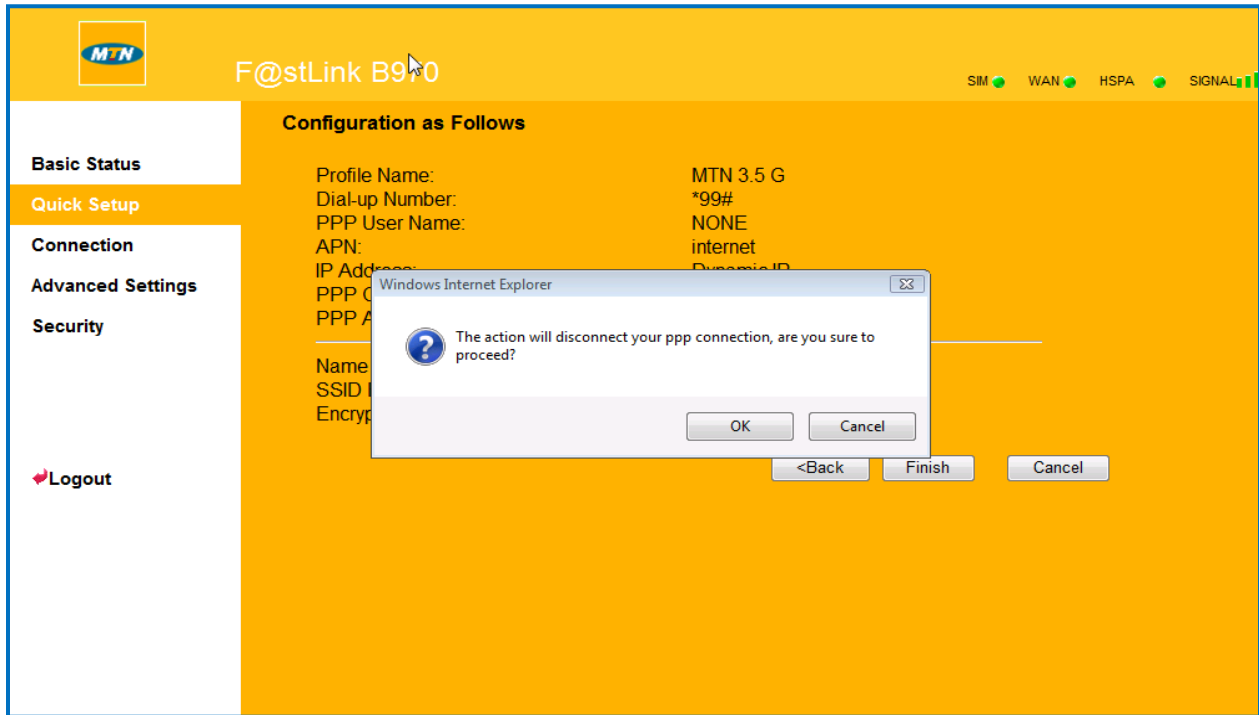
Step 6: Configuring WLAN Security – Change the password in **WPA Pre-Shared Key** into your preferred password and then Click <Next> to Continue. Currently, the default password is “MTNGhana”.
(Caution: Do not change anything on the screen)



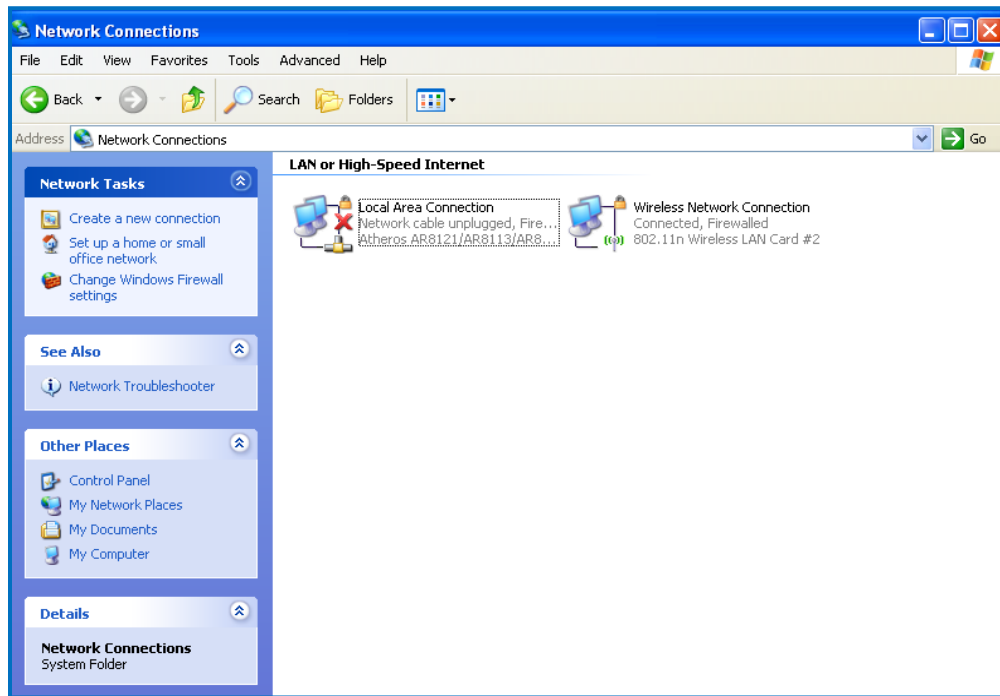
Step 7: Click <Finish> to Continue **(Caution: Do not change settings on the screen)**



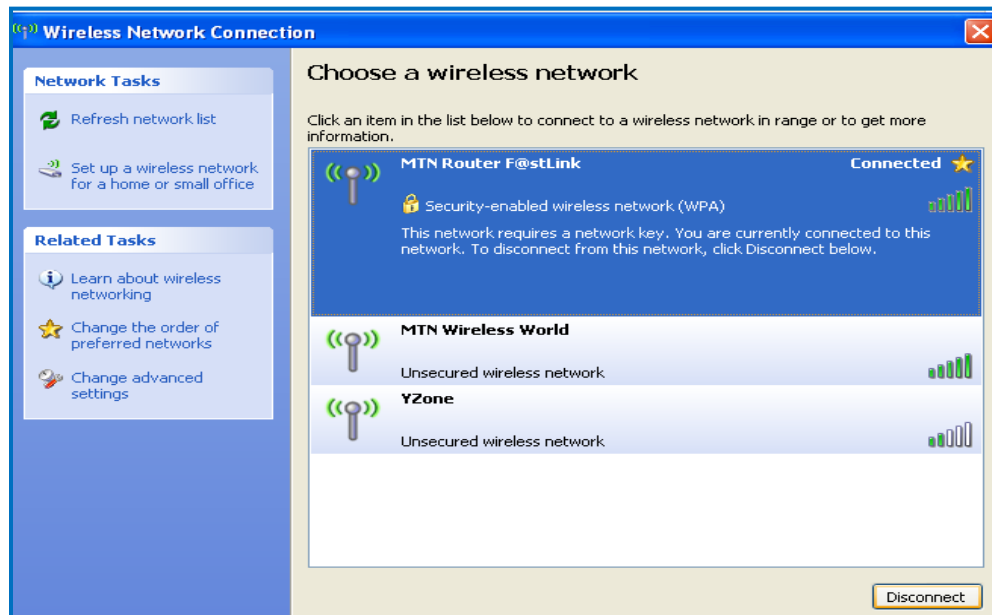
Step 8: Pop Up on Screen - When the Pop up appears on the screen, Click “OK” and “Finish” to “Continue”. Close the browser to complete password change.



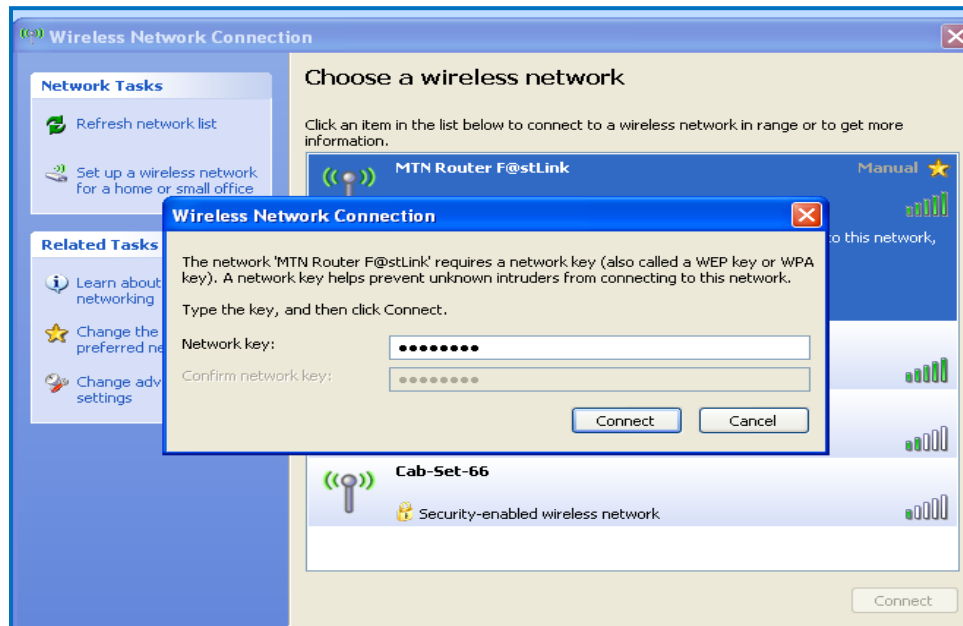
Step 7: Select Network Connection - from the Control Panel on the main Windows Menu. Select Wireless Connection by double clicking on the Wireless Network Connection Icon



Step 8: Select “**MTN Router F@stLink**” Connection by double clicking on the icon. A Pop up will prompt you to type in “**Network Key**”, which is also referred to as password.



Step 9: Network Key: Make sure the Network Key matches the previous password created in the URL (192.168.1.1), then Click on “Connect” as shown below to finish.



You can now browse with ease and thank you for using the MTN 3.5G Router F@stlink.