

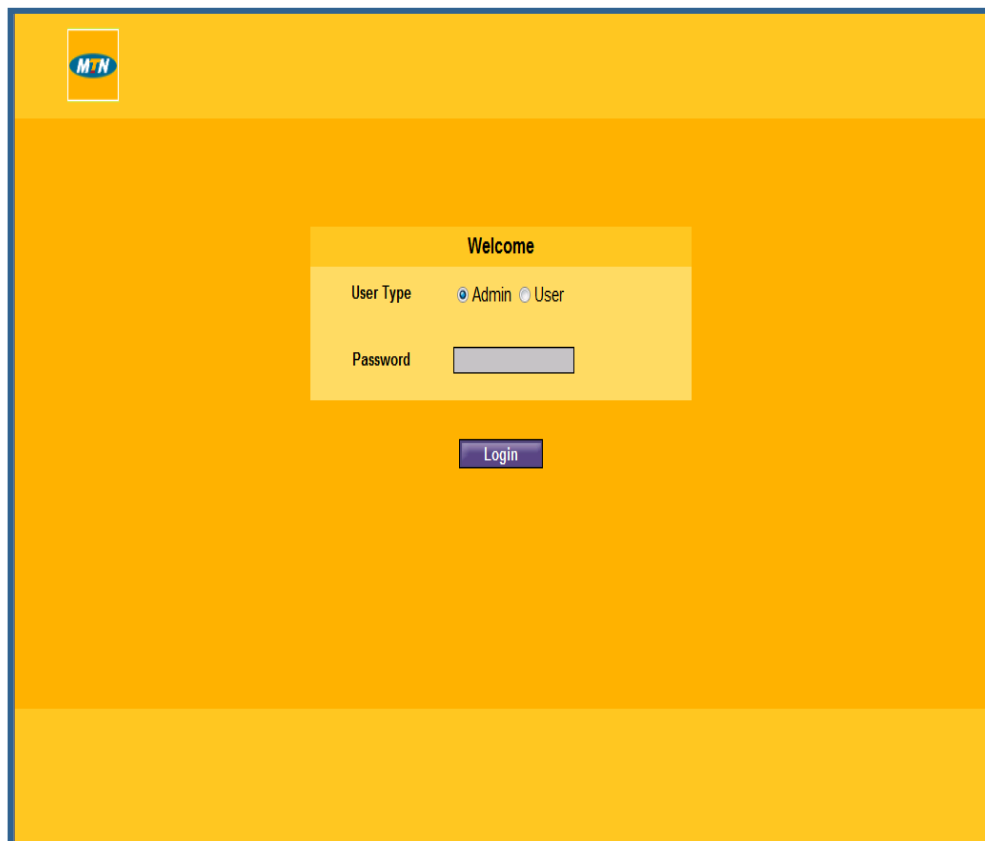
HOW TO CHANGE YOUR MTN 3.5G ROUTER F@STLINK ON XP –OPTION 2

The MTN range of routers allows you to setup a wireless (WLAN) flexibly access to the internet. The latest 3.5G router known as the 'MTN 3.5G Router F@st Link', is equipped with an embedded high-speed wireless solution which allows a user to share connection with multiple users.

Before you use the MTN 3.5G Router Fastlink, we recommend you change the following settings immediately to secure your wireless router and prevent unauthorized access.

Step 1: Log in

Use your internet browser to navigate to the router management page (<http://192.168.1.1>), and then type in your password.



The screenshot shows the login interface for the MTN 3.5G Router F@st Link. The background is a solid yellow color. In the top left corner, there is a small square icon with the MTN logo. Centered on the page is a white rectangular box with a thin border. Inside this box, the word "Welcome" is displayed at the top. Below it, there is a "User Type" section with two radio buttons: "Admin" (which is selected) and "User". Underneath, there is a "Password" section with a text input field. At the bottom of the white box, there is a blue button with the word "Login" written on it.

Note: In order to avoid any conflict in configuration, only one user is allowed to log into the router management system at a time.

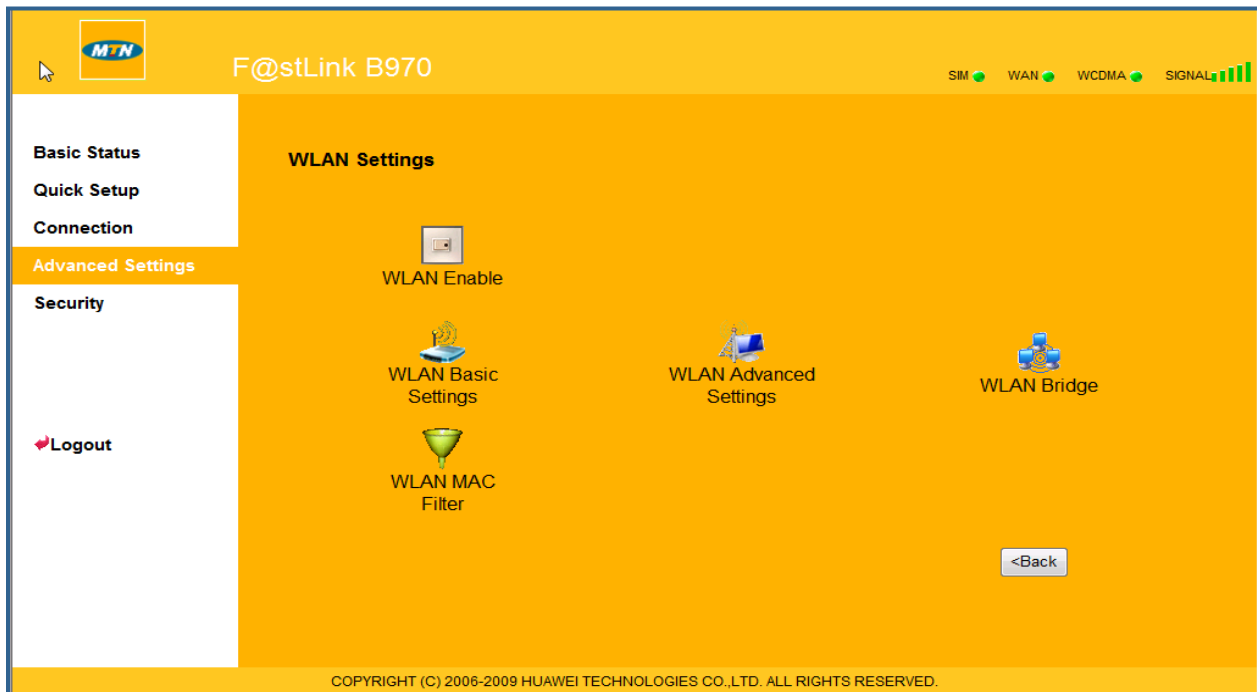
Admin: The default password is **admin**. Admin option allows the administrator to view and modify configurations.

User: This option allows the user to view only the basic information. The default password is **user**.

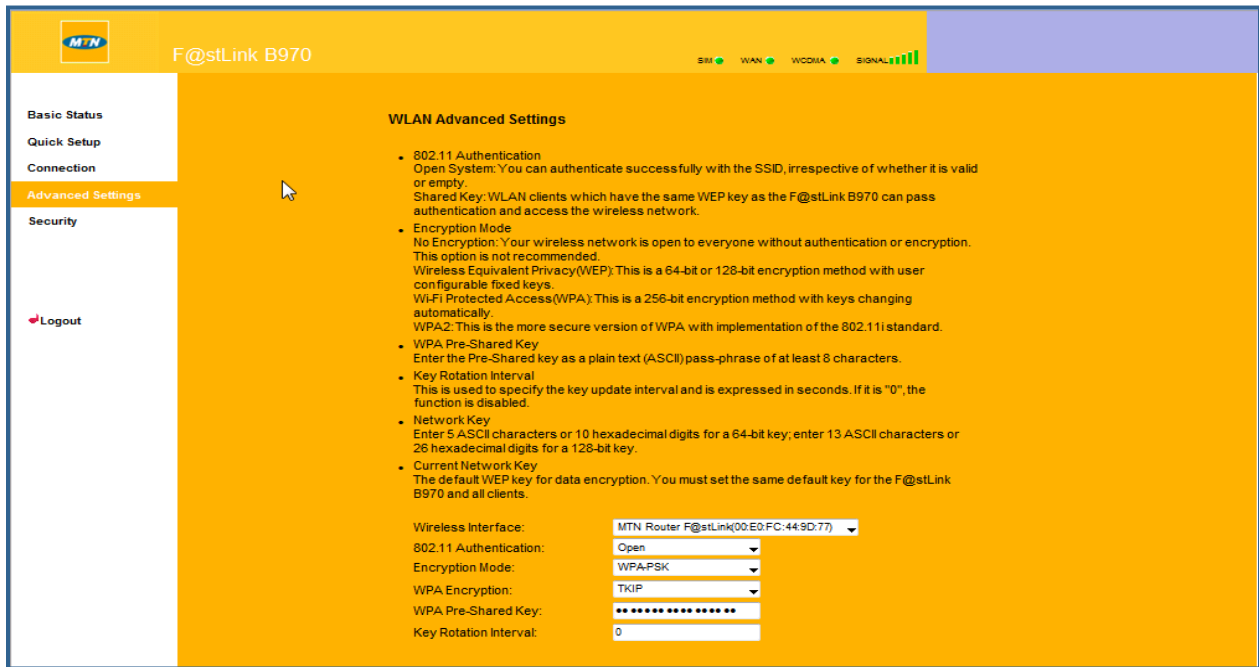
Step 2: Click Advanced Settings and then Select WLAN Settings



Step 3: Click <WLAN Basic Settings> to change WPA Pre-Shared Key (*Caution: Do not change settings on the screen*)



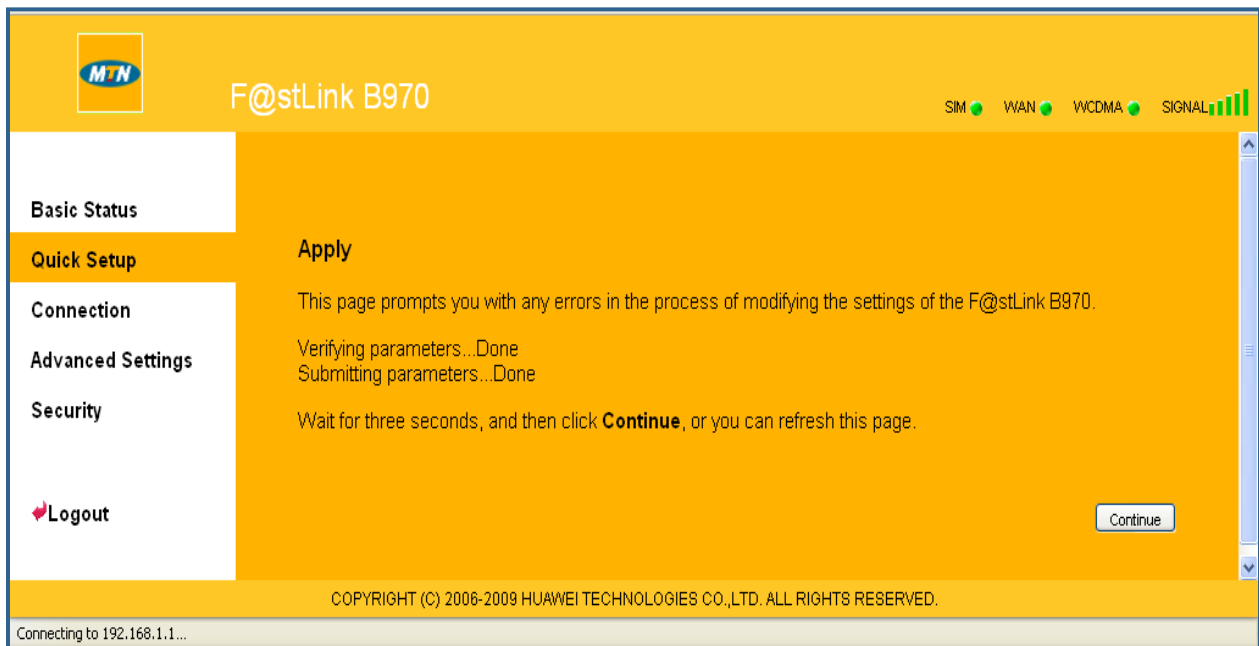
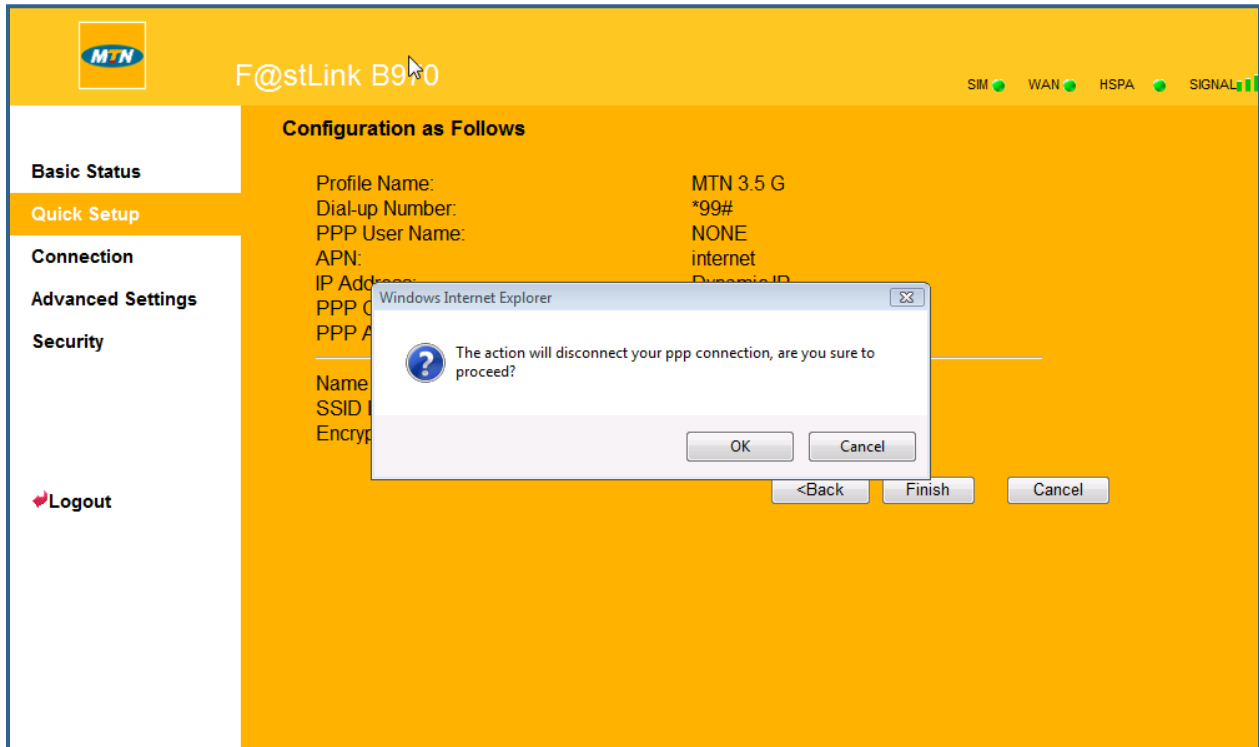
Step 4: Configuring WLAN Security – Change the password in **WPA Pre-Shared Key** into your preferred password and then click <Next> to Continue. Currently, the default password is “MTNGhana”.
(Caution: Do not change anything on the screen)



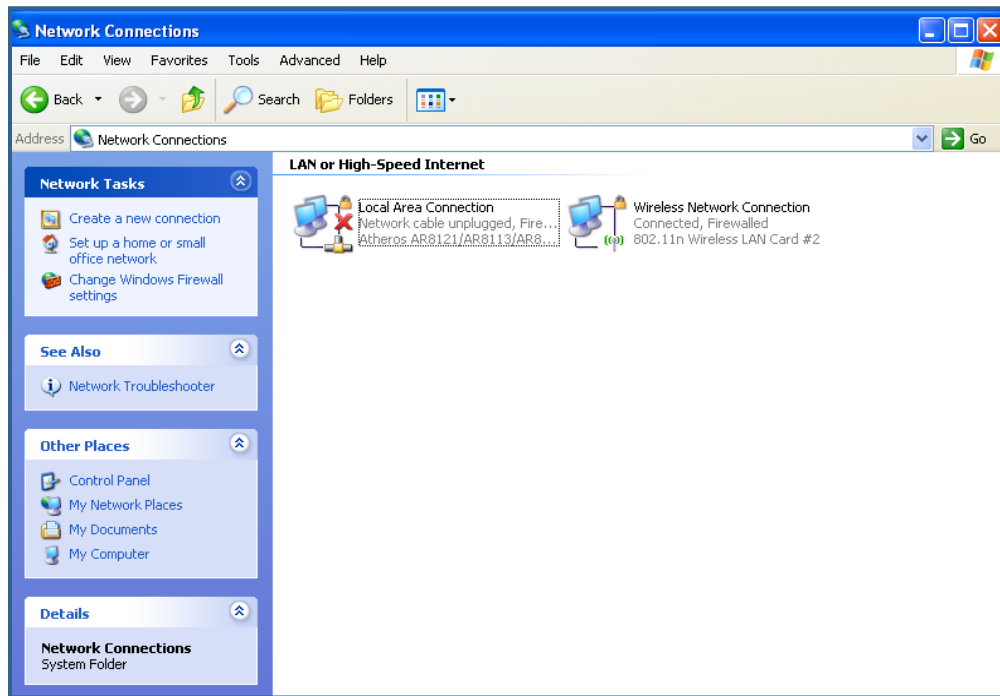
Step 5: Click <Finish> to Continue **(Caution: Do not change settings on the screen)**



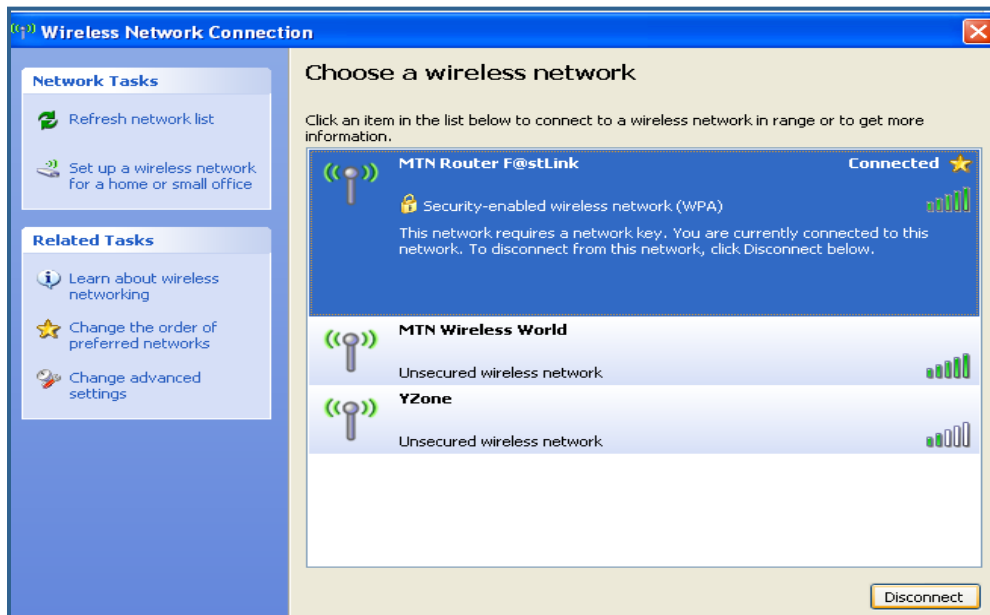
Step 6: Pop Up on Screen - When the Pop up appears on the screen, Click “OK” and “Finish” to “Continue”. Close the browser to complete password change.



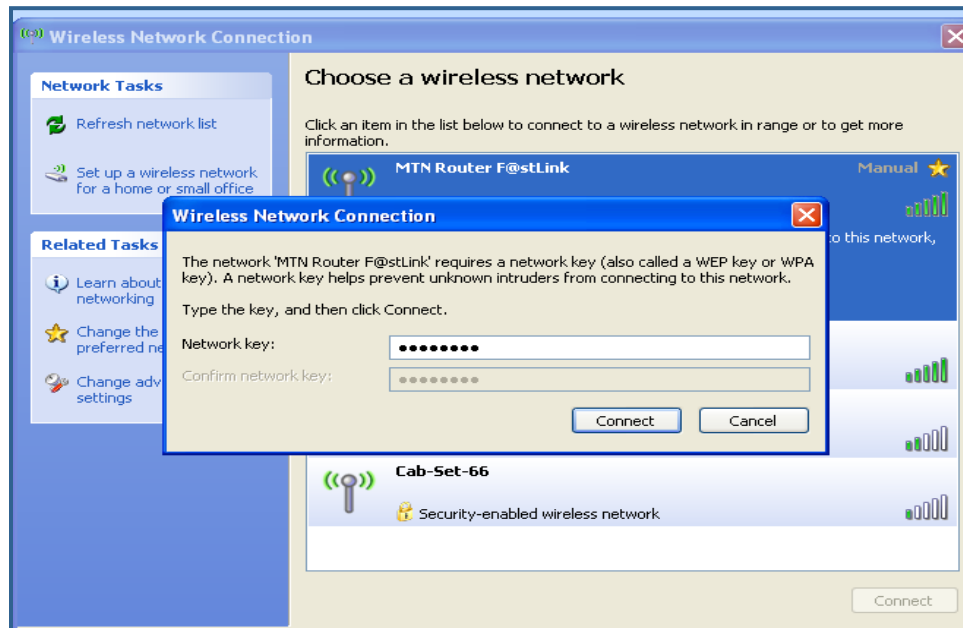
Step 7: Select Network Connection - from the Control Panel on the main Windows Menu. Select Wireless Connection by double clicking on the Wireless Network Connection Icon



Step 8: Select “MTN Router F@stLink” Connection by double clicking on the icon. A Pop up will prompt you to type in “Network Key”, which is also referred to as password.



Step 9: Network Key: Make sure the Network Key matches the previous password created in the URL (192.168.1.1), then Click on “Connect” as shown below to finish.



You can now browse with ease and thank you for using the MTN 3.5G Router F@stlink.