

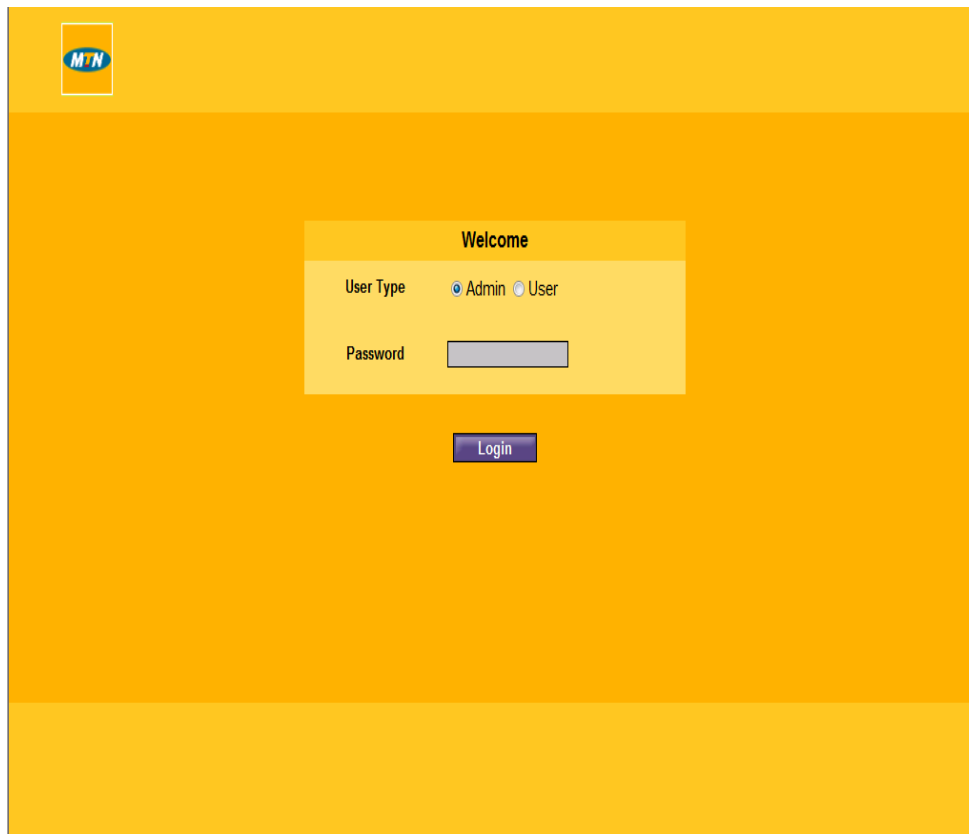
HOW TO CHANGE YOUR MTN 3.5G ROUTER F@STLINK ON VISTA

The MTN range of routers allows you to setup a wireless(WLAN) flexibly access to the internet. The latest 3.5G router known as the 'MTN 3.5G Router F@st Link', is equipped with an embedded high-speed wireless solution which allows a user to share connection with multiple users.

Before you use the MTN 3.5G Router Fastlink, we recommend you change the following settings immediately to secure your wireless router and prevent unauthorized access.

Step 1: Log in

Use your internet browser to navigate to the router management page (<http://192.168.1.1>), and then type in your password.

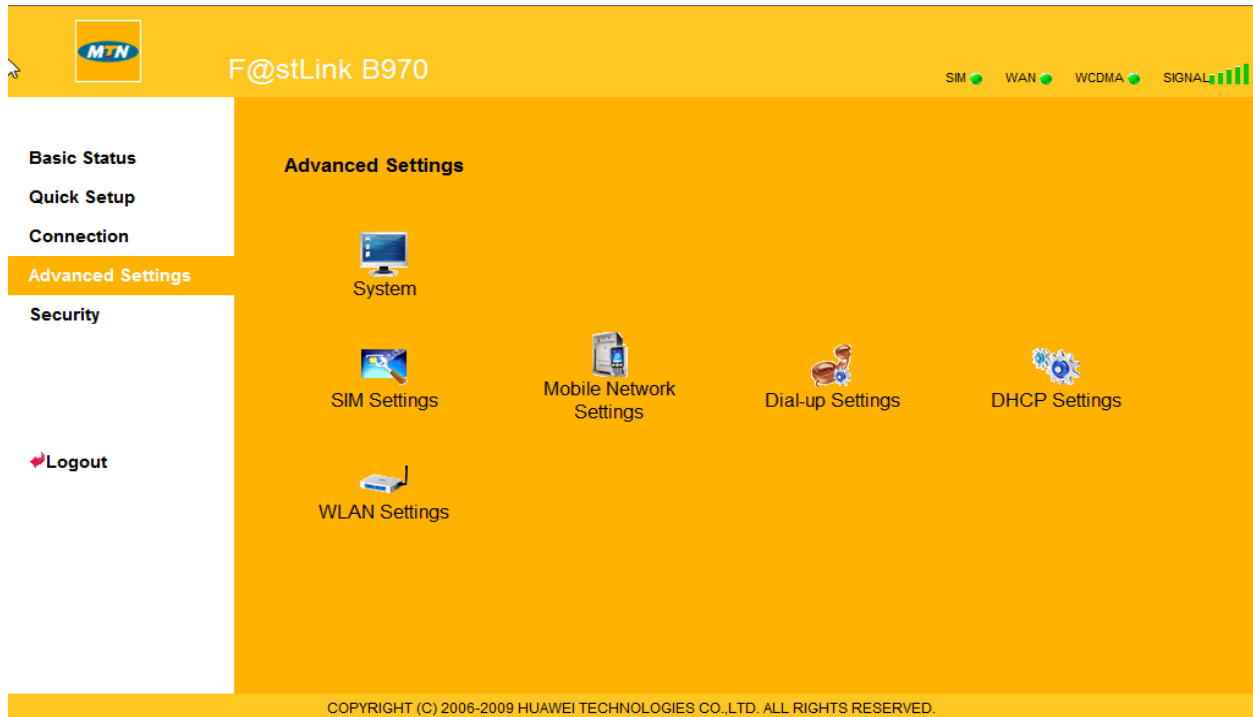


Note: In order to avoid any conflict in configuration, only one user is allowed to log into the router management system at a time.

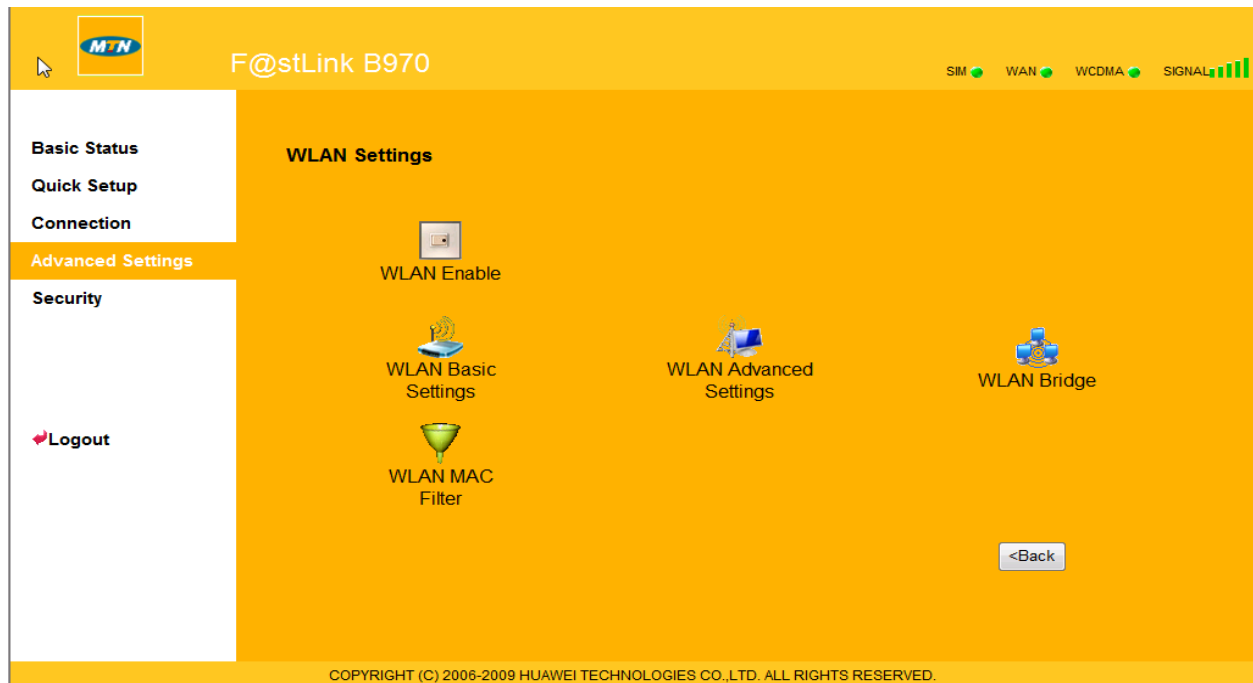
Admin: The default password is **admin**. Admin option allows the administrator to view and modify configurations.

User: This option allows the user to view only the basic information. The default password is **user**.

Step 2: Click Advanced Settings and then Select WLAN Settings



Step 3: Click <WLAN Basic Settings> to change WPA Pre-Shared Key (*Caution: Do not change settings on the screen*)



Step 4: Configuring WLAN Security – Change the password in **WPA Pre-Shared Key** into your preferred password and then Click <Next> to Continue. Currently, the default password is “**MTNGhana**”. **(Caution: Do not change anything on the screen)**

WLAN Advanced Settings

- **802.11 Authentication**
Open System: You can authenticate successfully with the SSID, irrespective of whether it is valid or empty.
Shared Key: WLAN clients which have the same WEP key as the F@stLink B970 can pass authentication and access the wireless network.
- **Encryption Mode**
No Encryption: Your wireless network is open to everyone without authentication or encryption. This option is not recommended.
Wireless Equivalent Privacy(WEP): This is a 64-bit or 128-bit encryption method with user configurable fixed keys.
Wi-Fi Protected Access(WPA): This is a 256-bit encryption method with keys changing automatically.
WPA2: This is the more secure version of WPA, with implementation of the 802.11i standard.
- **WPA Pre-Shared Key**
Enter the Pre-Shared key as a plain text (ASCII) pass-phrase of at least 8 characters.
- **Key Rotation Interval**
This is used to specify the key update interval and is expressed in seconds. If it is "0", the function is disabled.
- **Network Key**
Enter 5 ASCII characters or 10 hexadecimal digits for a 64-bit key; enter 13 ASCII characters or 26 hexadecimal digits for a 128-bit key.
- **Current Network Key**
The default WEP key for data encryption. You must set the same default key for the F@stLink B970 and all clients.

Wireless Interface: MTN Router F@stLink(00:E0:FC:44:9D:77)

802.11 Authentication: Open

Encryption Mode: WPA-PSK

WPA Encryption: TKIP

WPA Pre-Shared Key: *****

Key Rotation Interval: 0

Step 5: Click <Finish> to Continue **(Caution: Do not change settings on the screen)**

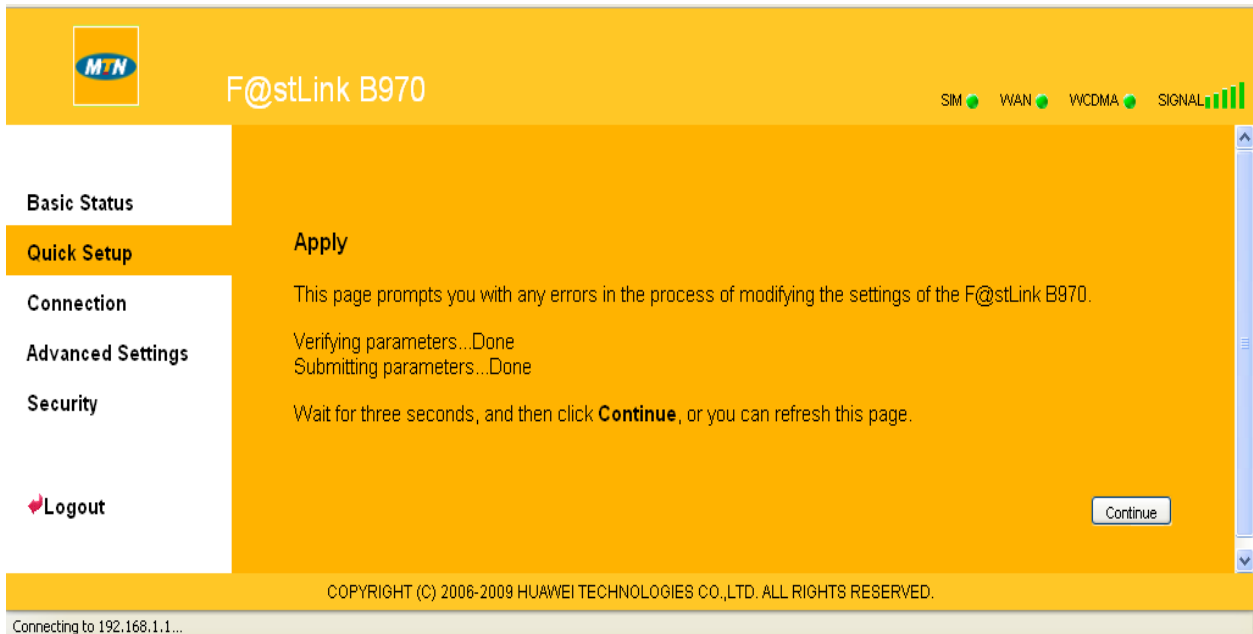
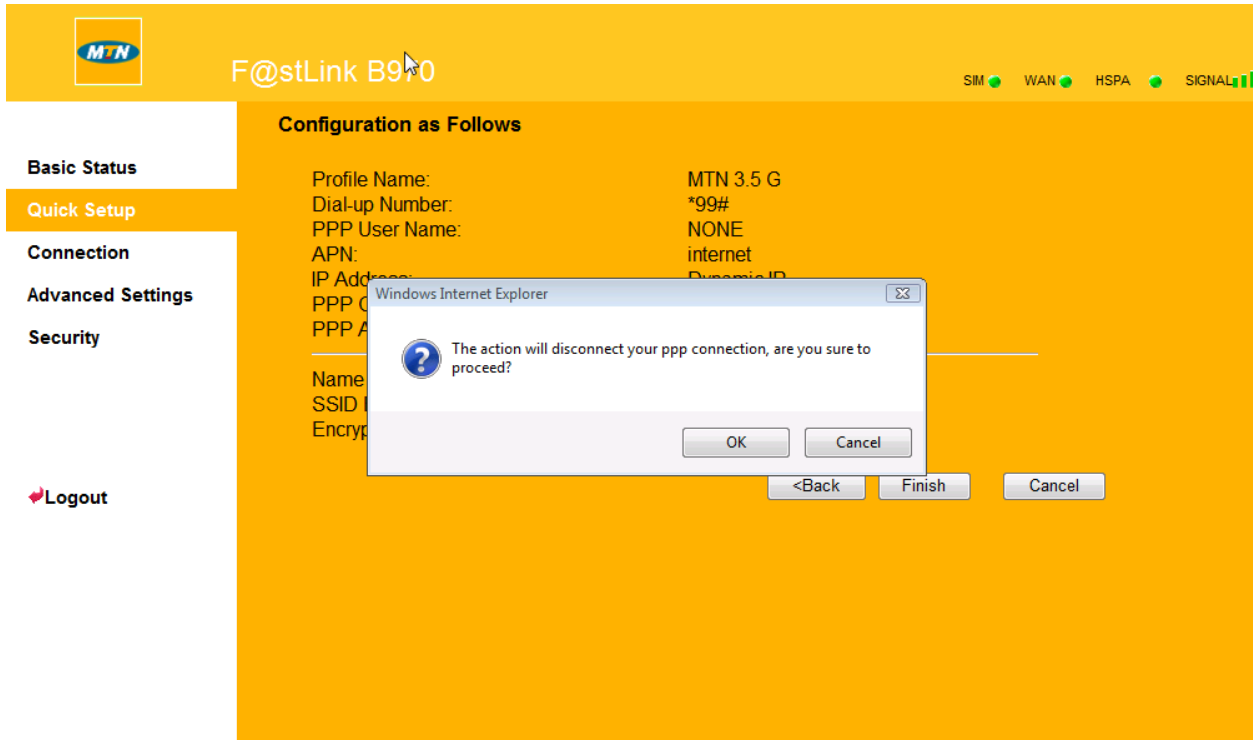
Configuration as Follows

Profile Name:	MTN 3.5 G
Dial-up Number:	*99#
PPP User Name:	NONE
APN:	internet
IP Address:	Dynamic IP
PPP Connection:	On Demand
PPP Authentication:	CHAP
<hr/>	
Name (SSID):	coffeecandle
SSID Broadcast:	Enabled
Encryption Mode:	WPA-PSK

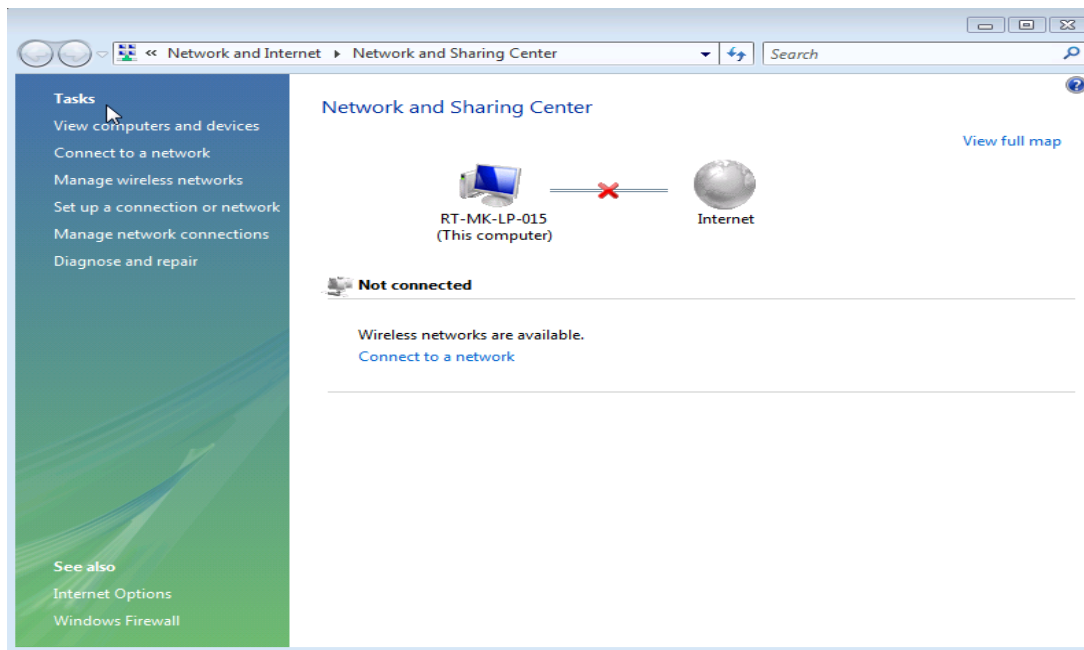
<Back Finish Cancel

COPYRIGHT (C) 2006-2009 HUAWEI TECHNOLOGIES CO.,LTD. ALL RIGHTS RESERVED.

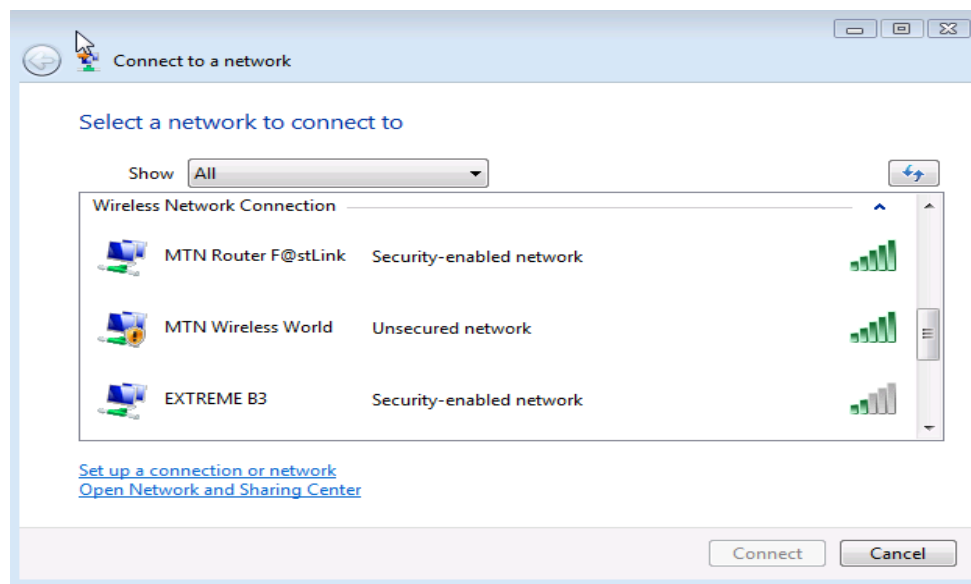
Step 6: Pop Up on Screen - When the Pop up appears on the screen, Click “OK” and “Finish” to “Continue”. Close the browser to complete password change.



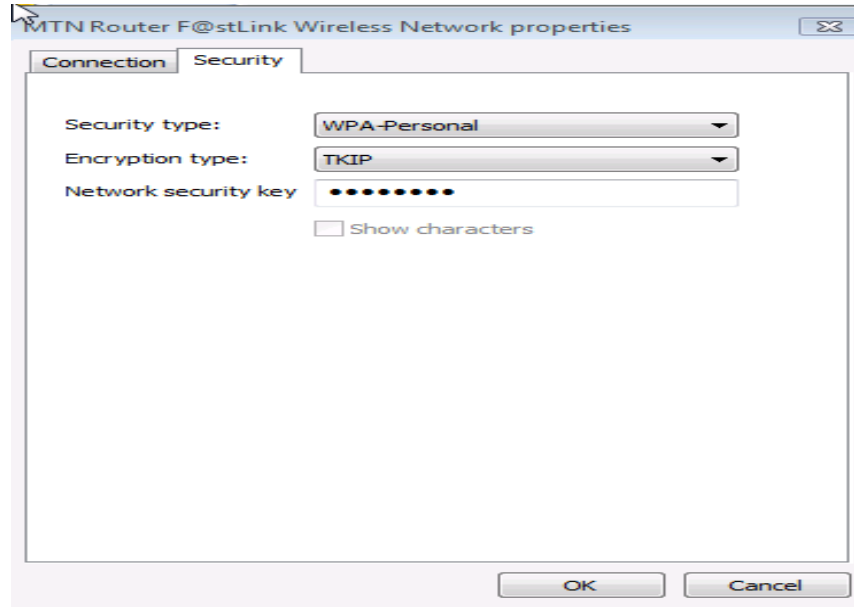
Step 7: Select Network and Sharing Center - from the Control Panel on the main Windows menu and then Click on **Connect to a Network**



Step 8: Right click on the “MTN Router F@stLink” connection to select “Option”.



As shown below, select the “**Security**” option to change the password in “**Network Security Key**” to match the previous password created in the **URL (192.168.1.1)**, then Click on “**OK**”. (*Caution: Do not change the Encryption Type nor the Security Type*)



You can now browse with ease and thank you for using the MTN 3.5G Router F@stlink.